



Author **Aide**

 10x faster test creation for L&D & Certification with AI



Housekeeping



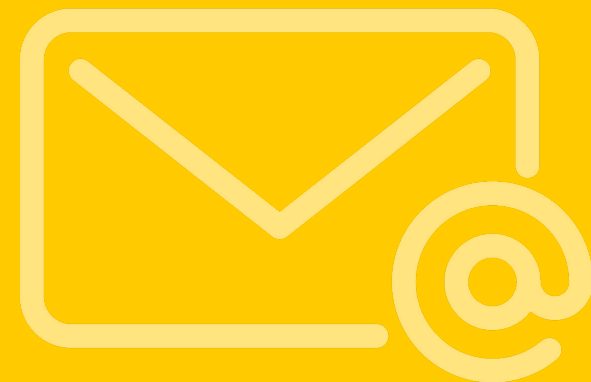
On joining, you're automatically muted.



Questions can be asked in the GoToWebinar Questions pane. Questions will be answered during the Q & A segment at the end of the webinar.



Any follow-up questions can be sent to team@learnosity.com.



This webinar is being recorded and the recording will be emailed to all registrants after the webinar.





Gavin Cooney

Founder & CEO



Neil McGough

Chief Product Officer

Poll

How comfortable are you with using AI?

Newbie

I've never used any AI tools

Novice

I've played with AI tools like ChatGPT etc

Proficient

I have some prompt engineering skills

Expert

I've been using AI since before it was cool



| Agenda

- Learnosity Mission and Vision
- Bringing the AI vision to life
- 10x faster test creation: Author Aide in action
- Looking ahead: Your AI roadmap
- Security, Intellectual Property & Copyright
- FAQs & Your Questions



| Learnosity Manifesto

Education is a human right. We believe that education and learning opportunities should be equitable, inclusive, and accessible to all.

Our mission is to advance education and learning, worldwide, with **best-in-class technology**. #livetolearn

Do the right thing. Fairness is the bedrock of our business. We're open, honest, and take full responsibility.

Aim higher. We keep raising the bar by not shying away from tackling the biggest challenges.

Success is best shared. Great things happen when everyone pulls in the same direction. We win together by working together.



Live to learn.



Do the right thing.



Aim higher.



Success is better shared.

About Learnosity

- Learnosity is the **global leader in AI assessment solutions** and was designed to answer a need for **more equitable and inclusive learning** opportunities. We focused on driving this change using impactful APIs.
- We deliver **19 billion questions every year** and support **750 customers worldwide**.
- In July we announced our commitment to delivering more AI solutions to the market by creating **AI Labs**, a move that will see **20+ new R&D experts** joining the Learnosity team whose focus will be on **delivering more AI innovation to Learnosity's products**.



230+
Employees

19BN+
Questions
delivered annually

750+
Customers



10x faster test creation

 Author Aide in action



Create

Review

Refine

Ready to dive in?

New multiple choice

New true or false

New cloze drag and drop

Translate items

Which of the following statements correctly informs a customer about the types of accounts and provides accurate disclosures relating to various account types and restrictions?

☐ Pattern day trading accounts require a minimum equity of \$10,000 and are subject to specific rules.

☒ Sole proprietorship accounts belong to businesses that are owned and operated by single individuals, offering a simple way for small businesses to operate. ✓

☐ Community property accounts enable two people to share account ownership equally, but only in states that do not recognize common law marriage.

☐ In a 457 retirement plan, there are no penalties for early withdrawal of the funds.

Correct ✓

2

Correct! A sole proprietorship is a type of business entity that is owned and run by one individual; there is no legal distinction between the owner and the business. Profits from the business go directly to the owner's personal tax return.

Creating a perfect 10 question

Imagine you are a financial advisor. A client, new to the world of finance, asks you to brief him on various types of accounts and the respective restrictions/requirements that apply to them. What would be your correct response from the following options?

You could go for a Pattern Day Trading account. It ☐ requires a minimum equity of \$10,000 and has specific rules. ✗

If you plan on sole ownership, a Sole Proprietorship account might work for you. This is optimal for small businesses where there is no clear boundary between the business and the owner. ✓

For joint ownership, Community Property accounts are ☐ suitable. But they only work in states that do not recognize common law marriage. ✗

If you're thinking retirement plans, the 457 plan is ☐ flexible. You won't face any penalties for early withdrawals. ✗

Correct ✓

2

Correct! A Sole Proprietorship is where a business is owned and run by one individual; there is no legal distinction between the owner and the business. Profits directly contribute to the owner's personal tax return.

Refine your question (optional)

How do you want to refine the generated question?

I can handle about 500 characters

Change original inputs



demo

Looking ahead

 Your AI Roadmap

| Generative AI for content Roadmap

Ingesting your source material behind the scenes

Cancel

Generate new item

Let's create a question together

Where do you want to start?

I have a topic in mind

Do you want to focus on a specific topic?

I can handle 500 characters

Do you want to use a team resource?

Str

Upload file

Stranger in a **Strange** Land and an adventure of two other people.pdf

The **Stranger**.pdf

The **Strongest** Steel.pdf

Strangers on a Train.pdf

The **Street**.pdf

Stranger Things Happen.pdf

| Generative AI for content Roadmap

Large scale batch creation of content

Cancel

I'm happy, start creating!

I can handle 4000 characters

Criteria 1

Question type

Multiple choice question

Questions

5

Total points

5

Do you want to focus on a specific topic?

☐ Does your question(s) need to assess a learning objective or standard?

^ View more

Number or responses

4

Number of correct answers

1

Grade

Grade 8

Level of Bloom's taxonomy

Depth of knowledge

Level 1 (Recall, easy)

Criteria 2

Question type

Cloze drag & drop

Questions

3

Total points

15

Do you want to focus on a specific topic?

Coming soon - AI Rubric Scoring

Explain the problems, both personal and societal, resulting from obesity

By: Carol Danvers

Obesity is a growing issue that many people, including children and adults, are facing in today's society. Obesity can lead to numerous personal and societal problems that affect individuals and communities as a whole. In this essay, I will discuss the different problems that result from obesity.

From a personal perspective, obesity can lead to several health issues such as diabetes, heart disease, and joint problems. For instance, excessive body weight can put a strain on the heart, making it work harder to pump blood throughout the body. This can then lead to heart-related problems, including heart attacks or strokes. Furthermore, obesity can cause type 2 diabetes, which is a condition where the body cannot properly regulate blood sugar levels. Additionally, obesity can result in joint problems because the extra weight puts more pressure on the joints, which can lead to arthritis and other joint disorders.

In addition to health problems, obesity can also affect a person's mental health. People who are obese often face social stigma and discrimination, which can lead to low self-esteem and depression. For instance, they might be teased or bullied because of their weight, or they might face discrimination when applying for jobs or trying to find clothes that fit. This can make it difficult for them to feel good about themselves and can lead to feelings of isolation and sadness.

Societal problems caused by obesity are also significant. One of the main societal problems is the economic cost associated with treating obesity-related health conditions. This includes the cost of medical treatments, surgeries, and medications, which can be very expensive. In addition, obesity can lead to decreased productivity in the workplace because people who are obese might take more sick days or be less able to perform their jobs due to health problems. This can then result in a loss of income for individuals and can also impact the economy as a whole.

Another societal problem is the strain that obesity puts on the healthcare system. Hospitals and clinics have to deal with a large number of patients who require treatment for obesity-related health conditions. This can lead to longer wait times for appointments and can also make it harder for people to receive the care they need.

In conclusion, obesity is a significant issue that can lead to numerous personal and societal problems. From a personal perspective, obesity can result in health problems, including heart disease, diabetes, and joint disorders, as well as mental health issues like depression and low self-esteem. Societally, obesity can lead to economic costs and strain on the healthcare system. It is essential to address this issue and work towards preventing and treating obesity to improve the health and well-being of individuals and society as a whole.

Criteria	Unsatisfactory 1	Needs Improvement 2	Satisfactory 3	Good 4	Excellent 5
Understanding of the topic	Fails to demonstrate an understanding of the topic	Demonstrates a limited understanding of the topic, with unclear or insufficient analysis	Demonstrates a basic understanding of the topic, with some basic analysis	Demonstrates a good understanding of the topic, with mostly clear analysis	Demonstrates a deep understanding of the topic, with clear and insightful analysis
Identification of Personal and Societal Problems	Fails to identify or analyse personal and societal problems resulting from obesity	Attempts to identify and analyse personal and societal problems resulting from obesity, but is unclear or incomplete	Identifies and analyses some personal and societal problems resulting from obesity, but lacks detail or clarity	Clearly identifies and analyses both personal and societal problems resulting from obesity, but may lack some detail or depth	Clearly and thoroughly identifies and analyses both personal and societal problems resulting from obesity
Use of Evidence	Does not use evidence to support analysis	Uses insufficient or irrelevant evidence to support analysis	Uses limited or somewhat relevant evidence to support analysis	Uses some relevant and credible evidence to support analysis	Uses a range of relevant and credible evidence to support analysis
Organization and Clarity	Essay is disorganised and unclear, with no strong topic sentences or transitions	Essay is poorly organised and unclear, lacking strong topic sentences and transitions	Essay is somewhat organised and clear, but may lack strong topic sentences and transitions	Essay is mostly organised and clear, with some strong topic sentences and transitions	Essay is well-organised and clear, with strong topic sentences and transitions
Grammar and Mechanics	Severe errors in grammar or mechanics that make the essay incomprehensible	Many errors in grammar or mechanics that impede understanding	Some errors in grammar or mechanics that do not significantly impede understanding	Few minor errors in grammar or mechanics	No errors in grammar or mechanics

Auto graded Manually graded

Total Score: 22 / 25

Summary of feedback:

You have showcased a deep understanding of the personal and societal problems resulting from obesity, providing clear and insightful analysis. To enhance your understanding further, consider exploring potential solutions to these problems as well.

You have clearly and thoroughly identified both personal and societal problems resulting from obesity. To strengthen your analysis, try to provide specific examples or data to support your points.

You have used some relevant evidence to support your analysis of personal and societal problems related to obesity. To improve, try to include more statistics or studies to strengthen your arguments.

Your essay is mostly organized and clear, with some strong topic sentences and transitions. To enhance clarity, ensure that each paragraph focuses on one main idea and use topic sentences to introduce each new point.

Your essay has few minor errors in grammar or mechanics. To achieve excellence, review your work for punctuation and verb tense consistency, and consider using more varied sentence structures.

Accept & Save feedback

Coming soon - Image Alt-Text & Accessibility

Multiple choice – standard

Compose question

Multiple choice options

☐ Show advanced accessibility

☐ [Choice A]

☐ [Choice B]

☐ [Choice C]

☐ [Choice D]

+ ADD

Set correct answer(s)

Correct ☐

1 Point(s)

☐ [Choice A]


☐ [Choice B]

☐ [Choice C]

☐ [Choice D]

☐ Multiple responses

Undo Redo Help Source



Alternative Text [★ \(Regenerate\)](#)

A grey cat with striking orange eyes wears a knitted yellow and orange hat and matching scarf, sitting amidst fallen leaves.

Image Alignment

None

Override image dimensions

Width (px) 750 Height (px) 562

If your image is larger than the content container, it will be scaled down automatically to fit. Preventing scaling will make the image conform to the image dimensions, regardless of container size.

☐ Prevent scaling

Reset Cancel OK



Coming soon - Diversity, Equity & Inclusion analysis

Diversity, Equity, and Inclusion (DEI) item checker



DEI Results

[Suggested fixes](#)

Category	Status	Detail
Race and Ethnicity	✗	Including race in the 'Customer' class is unnecessary for the scenario presented and could be seen as promoting racial profiling.
Gender and Sexual Orientation	✗	The gender attribute should be inclusive of all gender identities, not limited to 'male' and 'female'.
Age	✓	Passed
Disability and Accessibility	✓	Passed
Religion and Spiritual Beliefs	✓	Passed
Social and Socioeconomic Status	✓	Passed
Cultural and Geographic Considerations	✓	Passed
Language Sensitivity	✓	Passed

Close



FAQ

 Your key questions answered

| Security, Intellectual Property & Copyright

- Author Aide brings the innovation without the data privacy risk. Create tests and write prompts safe in the knowledge that **your intellectual property remains yours and is not stored or used as training material for any of the LLMs we use within our solutions.**
- We design our solutions with security and IP ownership in mind from the ground up. **We're built to be adoptable and licensable by large enterprises.**
- Neither Learnosity, or the LLMs used make any claims to any sort of copyright for source material or for questions produced. **Our customers own the output from Author Aide**, as much as possible by the applicable legal jurisdiction.





Q&A

| Your questions answered

| Questionmark's resources

Want to learn more?

Visit questionmark.com



 Webinar recording

AI and Assessments: Positive Disruption

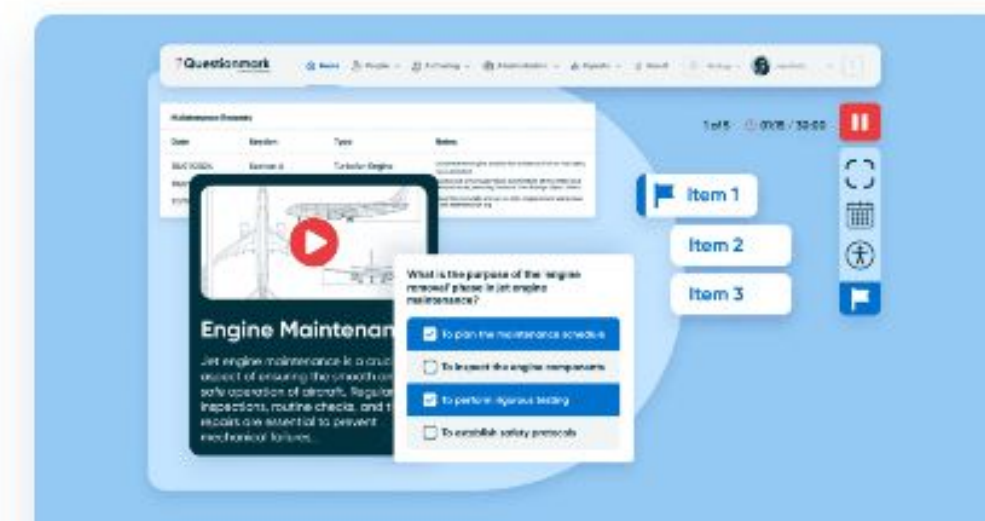
See a demo of Learnosity's soon-to-be released AI-enabled authoring tool.



 Blog

AI & Assessments: When the stakes are high

When the stakes are high, how do you ensure staff are competent and skilled? And what does AI mean for the stakes of assessments?



 Blog

Assessments Just Got Advanced

Discover powerful, flexible, and accessible assessments supported by Learnosity's gold-standard assessment engine.

Unlocking the Potential of Assessments

Hosted by
John Kleeman

? Questionmark
powered by Learnosity

From blogs to podcast episodes, explore our resources for more.



questionmark.com

Copyright © 2024 Learnosity. All rights reserved.

