

Formative Assessments

The Feedback Formula for Success

 Tuesday Training with the Techs

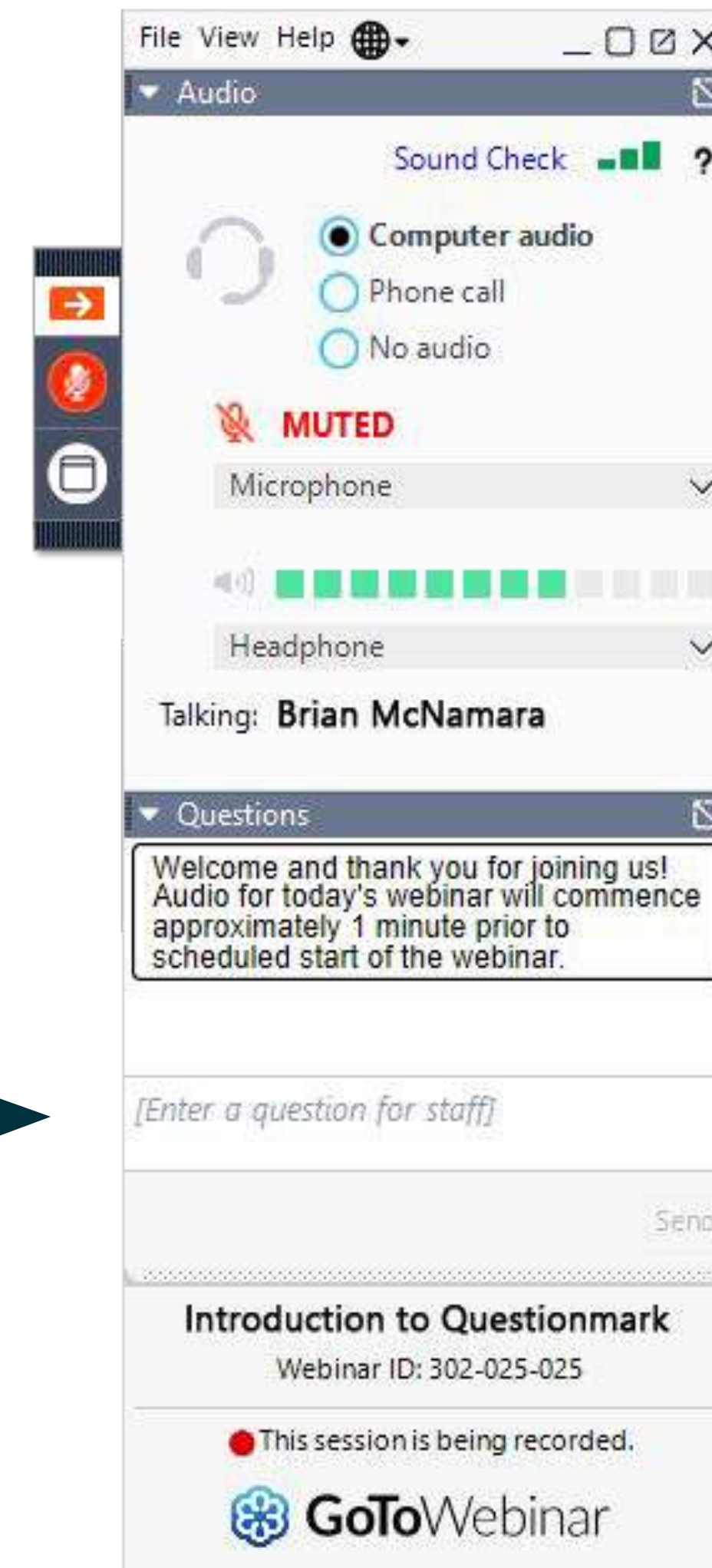


Before we get started

Watch for an email after the webinar to:

- Download slides (PDF)
- View a recording
- Explore valuable resources

To ask questions, use
the "Questions" feature





Tom Leggett

Training & Solutions
Consultant



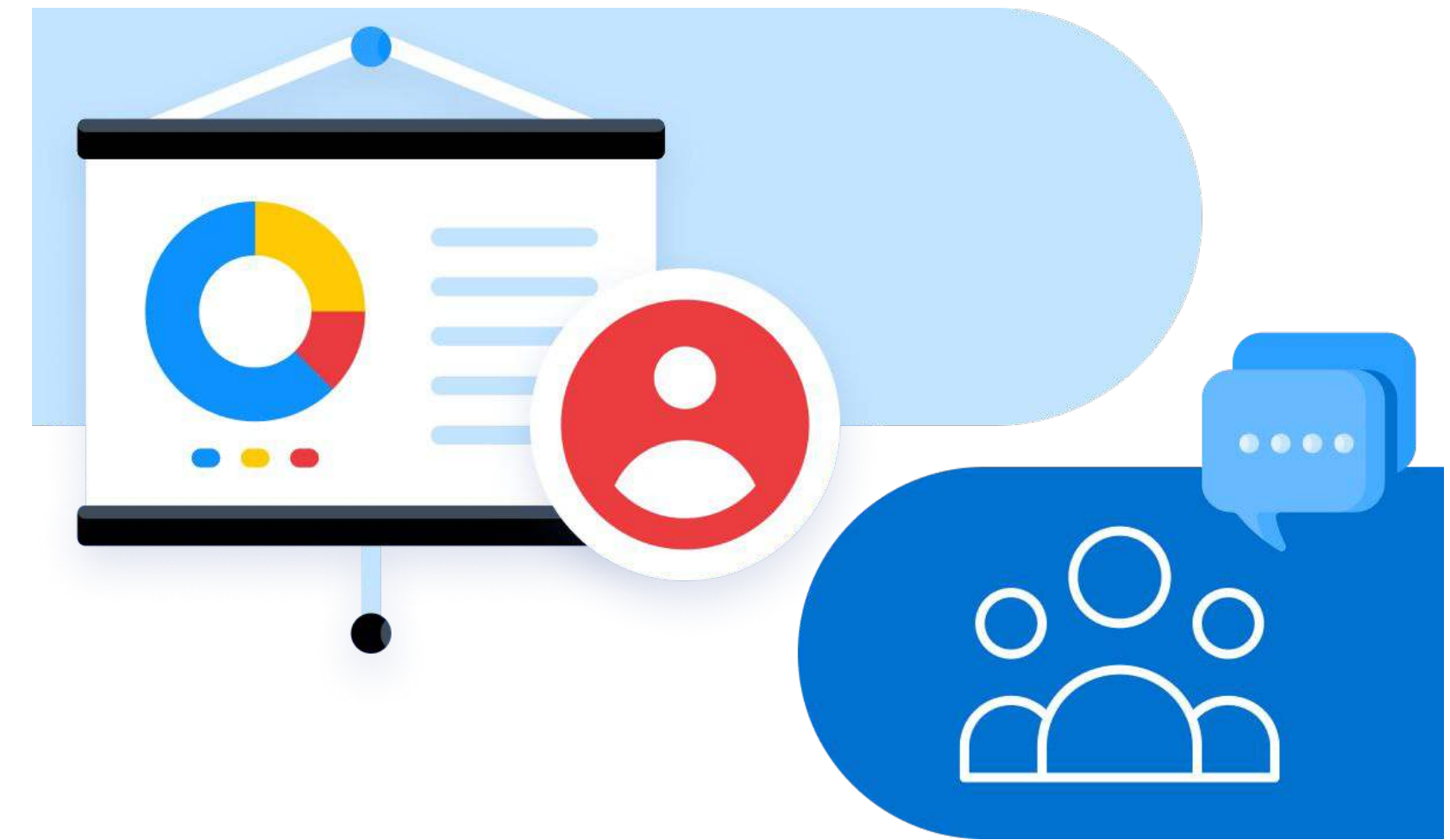
Nina Agressott

Training & Solutions
Consultant

| Agenda

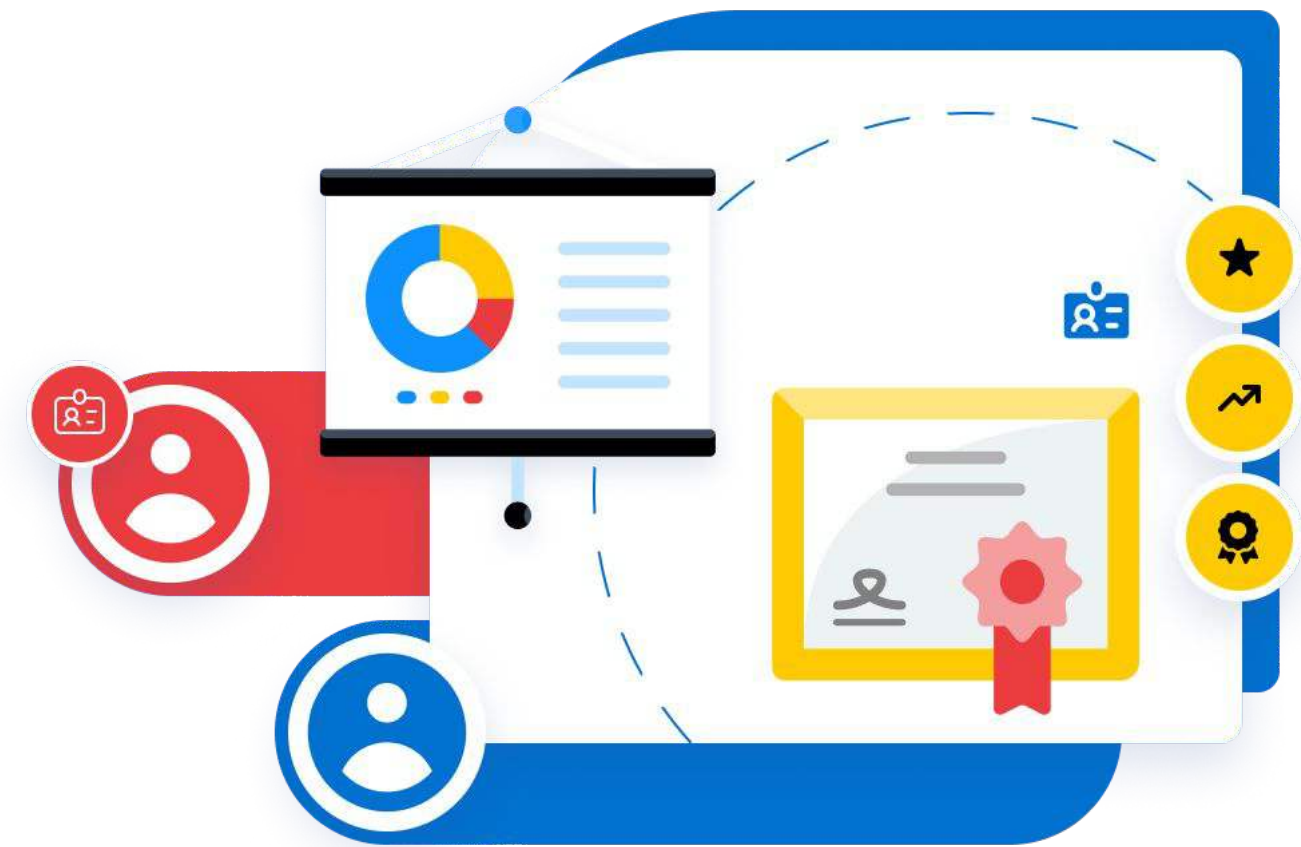
During this session, we will cover:

- What are formative assessments?
- Applying feedback – how to use question, topic, and assessment-level feedback
- Branching – how to use to branch to easier/harder assessments
- Question description – how to leverage properly for assessment usage
- Reporting – how to use reporting for coaching and remediation purposes



| Formative Assessments

Quizzes and Knowledge Checks



| Applying Feedback

Item

Topic

Assessment

Applying Feedback

Item

[illegible]

Applying Feedback

Item

Save

Advanced



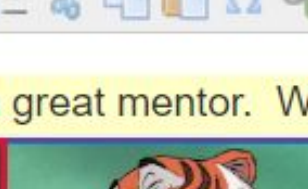
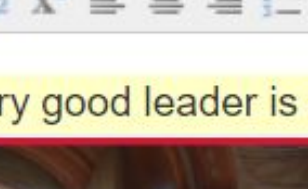
Exit

Spell check

Hide feedback

B I U x₂ x² [list icon] [bulleted list icon] [link icon] [image icon] [video icon] [audio icon] [text color icon] [background color icon] [font size icon]

Behind every good leader is a great mentor. Which of these characters is a great mentor?



+ ● Merlin

That is correct. Merlin was a very powerful and knowledgeable wizard and mentored Arthur, who became the King of England,

- 1 ✕

+ ○ Sher Kahn

That is incorrect. Sher Kahn was a villain and did not serve as a mentor in his movie. Please reference Training Module 4, which covers the origin stories of key storyline characters.

- 0 ✕

Applying Feedback

Topic

Questions (3)	Outcomes	Scales	Archived Questions (0)
---------------	----------	--------	------------------------

<input type="checkbox"/>	Title ▲	Minimum score ▼	Maximum score
<input type="checkbox"/>	Exceeds Expectations	85	100
<input type="checkbox"/>	Meets Expectations	70	84
<input type="checkbox"/>	Needs Improvement	0	69

Topic Outcomes

Title

Exceeds Expectations

Score range

85	% -	100	%
----	-----	-----	---

Feedback

B I U x₂ x²

You have shown that you have a solid understanding of this topic. Great job!

| Applying Feedback

Assessment

Settings



General

Security

Item-level feedback

Type of feedback

End of the assessment



Display feedback to which questions

Wrong and unanswered



☐ Disable feedback for unscored questions

OK

Cancel

Live Demonstration

Branching

Route learner to
another assessment



▼ Outcomes + Add

+ ▼ Pass ✕ Delete

Score range: 65 to 100

Feedback

Email

✕ Branching

🔍 Prerequisites

Branching

Branch to another published assessm ▼

Branch to another published assessment

- ▶ 🏆 A new assessment folder
- ▶ 🏆 Assessments assessments assessments

Live Demonstration

Question Description

Save Advanced Exit Spell check Show feedback

B I U x₂ x² [list icons]

Behind every good leader is a great mentor. Which of these characters is a great mentor?

Question Description
vs. Question Wording

Question Properties

Question Description

Learning Objective 1: Leadership

Original Reference

Original Reference

Review Status

Review Status

Question Status

Normal

Copyright Holder

Copyright Holder

Language

Question type

Multiple choice

OK

Cancel

<input type="checkbox"/>	Orde... <div></div>	Description <div></div>	Type <div></div>
<input type="checkbox"/>	1	Learning Objective 1: Leadership	Multiple choice

Reporting

Coaching Report

1

Where in Canada is the Questionmark office?



Maximum score	1
Answer given	Edmonton
Actual score	1
Question wording	Where in Canada is the Questionmark office?
Question type	Multiple Choice

Topic Name	Topic description	Outcome	Questions
------------	-------------------	---------	-----------

Topic1	Topic1		2
--------	--------	--	---

Comparison	%	#	
▼ Score	100%	101/101	0% 20% 40% 60% 80% 100%
▲ Benchmark	50%		

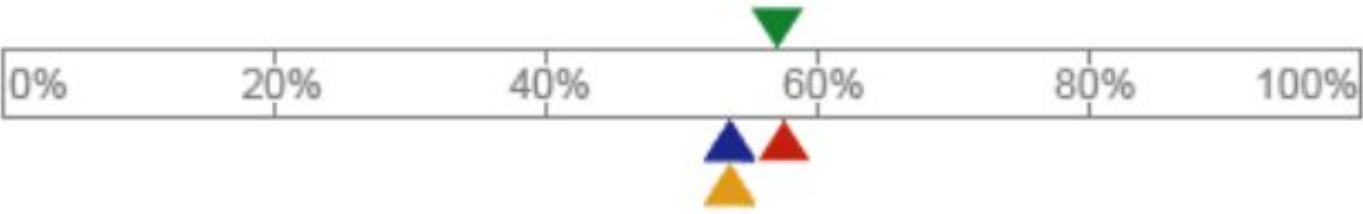
Overall

Assessment

Comparison	%	#	
▼ Score	53.57%	15/28	0% 20% 40% 60% 80% 100%
▲ Benchmark	50%		

Example Questions

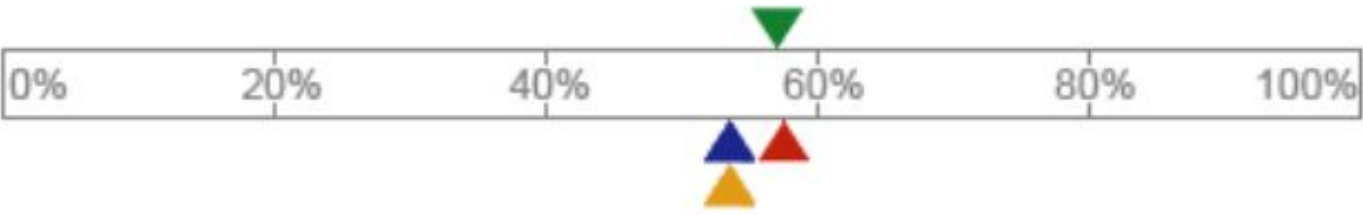
Comparison	%	#
▼ Participant	57.14	16/28
▲ Min score	53.57	15/28
▲ Avg score	53.57	15/28
▲ Max score	57.14	16/28



Overall





Assessment

Comparison	%	#
▼ Participant	57.14	16/28
▲ Min score	53.57	15/28
▲ Avg score	53.57	15/28
▲ Max score	57.14	16/28



Reporting

Coaching Report:
Question Description
vs. Question Wording

Question Description	
3	Learning Objective 1: Leadership
Maximum score	1
Answer given	Shere Kahn
Actual score	0
Behind every good leader is a great mentor. Which of these characters is a great mentor?	
<div>Question wording</div> <div></div>	
Question type	Multiple Choice

Reporting

Topic Report

Topic Demographic Heatmap Report

Preview RecordsAll

Filters

Apply FilterClear Filter

* AssessmentTopic* Demographic

...

Topic Demographic Heatmap Report

This report displays the average performance for a chosen demographic in the topics contained within an assessment, or across multiple assessments.

Report Filter Info:
1 Assessment = Electrical Skills Test
2 Topic = [NULL]
3 Demographic = Group
4 Results finished start date =
5 Results finished end date =

	AC Motors	High Voltage Switchgear	Synchronous Motors
Topic	C - Industry Specific Ques...	C - Industry Specific Ques...	C - Industry Specific Ques...
Demographic	Median score	Median score	Median score
<Not defined>	42%	7%	10%
Assembly	79%	88%	80%
Fabrication	75%	88%	60%
Maintenance	75%	88%	60%
Molding and Casting	75%	88%	60%

Topic Participant Heatmap Report

Preview RecordsAll

Filters

Apply Filter

Results finished start dateResults finished end date

...

		AC Motors	High Voltage Switchgear	Synchronous Motors	Total Score
		C - Industry Specific Questi...	C - Industry Specific Questi...	C - Industry Specific Questi...	
Participant	Group	Score	Score	Score	
Abigail Mathis	Assembly	75%	88%	80%	81%
Abigail Wallace	Maintenance	100%	88%	60%	83%
Adam Butler	Fabrication	100%	100%	100%	100%
Adrian Ball	Fabrication	75%	75%	40%	63%
Adrian Glover	Maintenance	83%	88%	80%	84%
Adrian Kerr	Fabrication	67%	75%	40%	61%

Resources

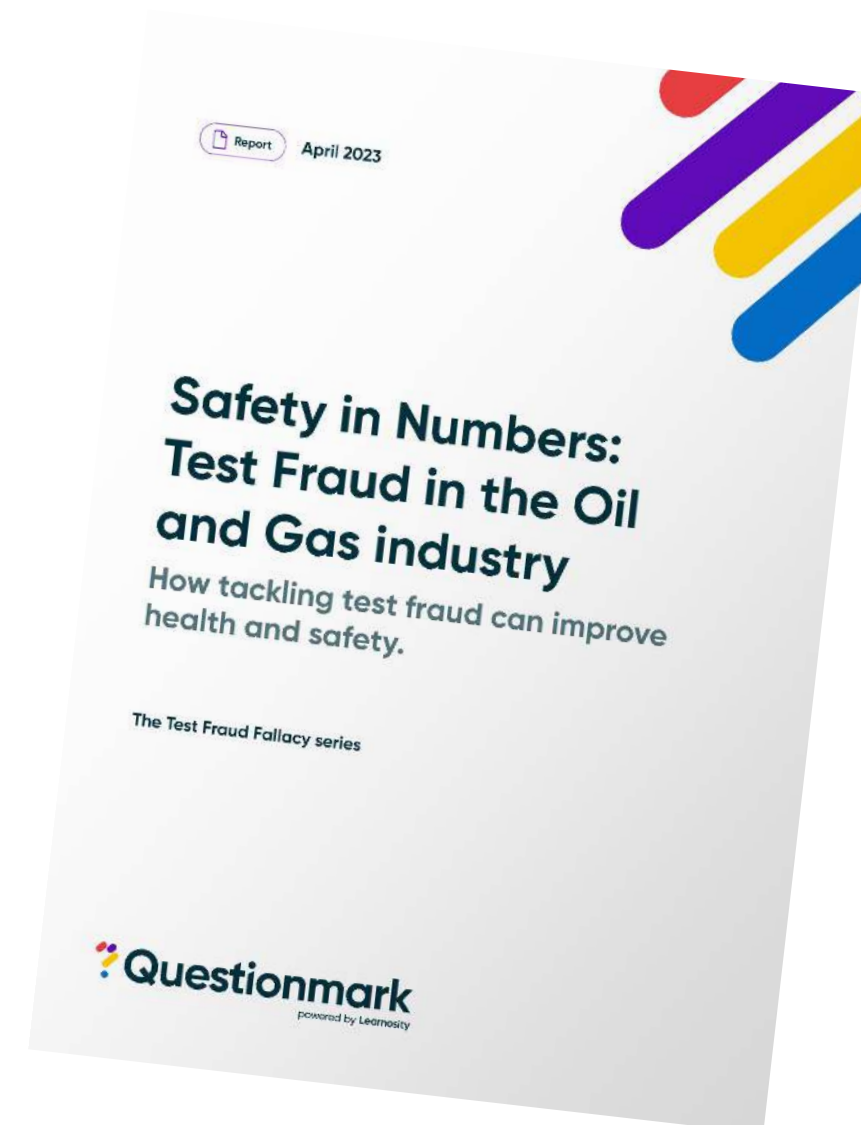
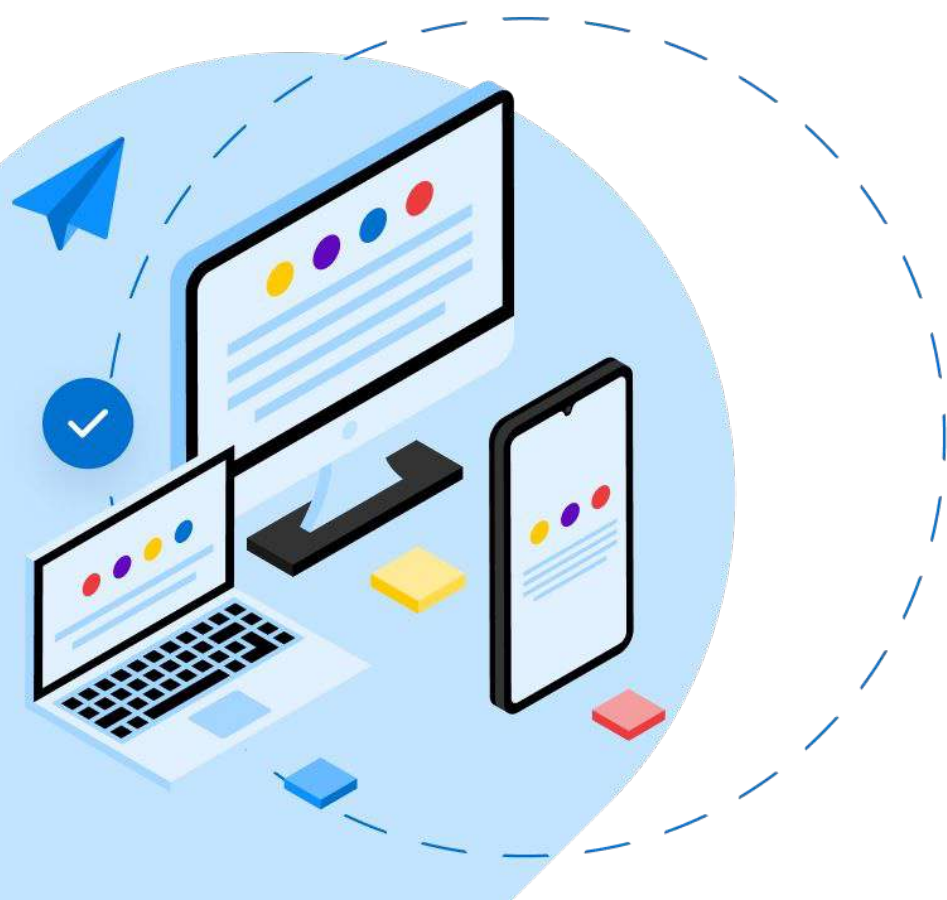
- Difference between quizzes, tests, exams, and surveys
 - <https://support.questionmark.com/content/the-difference-between-quizzes-tests-exams-and-surveys>
- Some things which can impact the statistics
 - https://support.questionmark.com/sites/default/files/PDF/Assessments_Through_the_Learning_Process.pdf
- Branching
 - <https://support.questionmark.com/content/branching-an-assessment-to-another-assessment-or-itself>
- Reporting
 - <https://support.questionmark.com/content/topic-demographic-heatmap>
 - <https://support.questionmark.com/content/topic-participant-heatmap>
 - <https://support.questionmark.com/content/the-coaching-report>
 - <https://www.questionmark.com/resources/webinars/tuesday-training-with-the-techs-building-report-rapport-customizing-reports/>

| Questionmark's resources

Check out our website to find the latest:

- Reports
- Webinars
- Blog Articles
- Podcast Episodes
- And more!

Visit questionmark.com



Assessments

Best Practice

Mastering Item Analysis

Learn how item analysis including item-total correlation and item difficulty can improve test quality and make your assessments better.


Unlocking the Potential of Assessments




Hosted by
John Kleeman

? Questionmark
powered by Learnosity


Upcoming webinars


powered by Learnosity


Webinar

Item Analysis for Beginners

Presented by
John Kleeman
Founder of Questionmark



May 24, 2023 - 11:00 am to 12:00 pm (EDT)

[Register now](#)

Item analysis allows you to evaluate the statistical performance of your questions and quickly spot the ones that may be problematic.

Effective use of item analysis can help you improve the validity, reliability and trustworthiness of your assessment.

Presented by Questionmark founder John Kleeman, this one-hour session explains the basics of item analysis and how to use the item analysis report in Questionmark software to get value within your assessment program.



questionmark.com

Copyright © 1995-2023 Questionmark Corporation and/or Questionmark Computing Limited, known collectively as Questionmark. All rights reserved.

