

Training with the Techs: Getting Your Questions Into Perception

Presented by:
Tom Gilkison



2008 Users Conference ♦ San Antonio

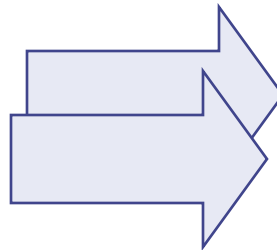
Why **Questionmark** Perception?

- Enterprise Assessment Solution
 - Integration and AICC / SCORM Compliant
 - 22 Question Types
 - Deliver by Browser, PDA, CD-ROM, Paper
 - Security for High Stakes Exams
- Centralized Item Bank
- Reporting
 - Results
 - Item Analysis



Common Challenges

- For Questions Exist in Another System
 - Question*mark* Content Converter
 - ◆ Migrate Questions Through Common Format (QTI, Blackboard)
 - Create Custom Application to Generate Import Files
 - Copy / Paste into Authoring Manager



Common Challenges

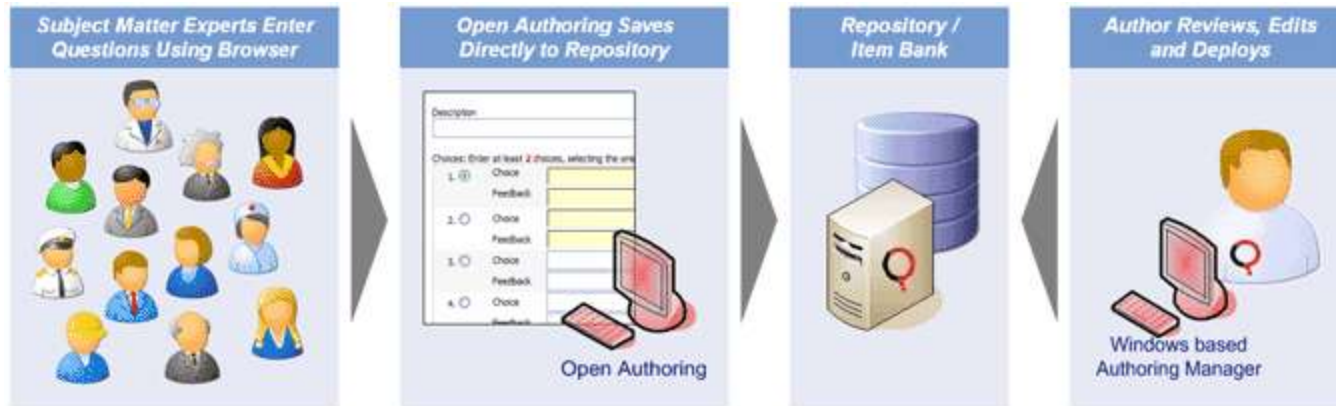
- Harvesting **New Questions** from Non-Technical Subject Matter Experts (SMEs)
 - Open Authoring
 - Word Template
 - Custom Word Template



Question Migration



Open Authoring



- Browser Based – No Software to Install
- Simple Tool – No Learning Curve
- Secure, Direct Input into the Repository



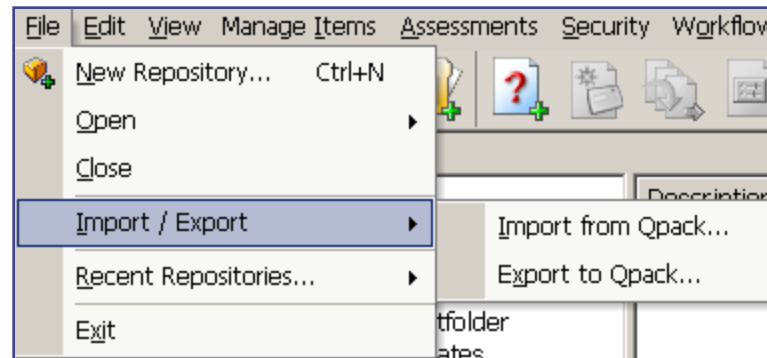
Open Authoring Demonstration

- Log-in Methods (Set in Perception.ini)
 - 0: Open Access
 - 1: Integrated Windows Authentication
 - 2: Enterprise Manager
- Demonstrate the Use of Open Authoring



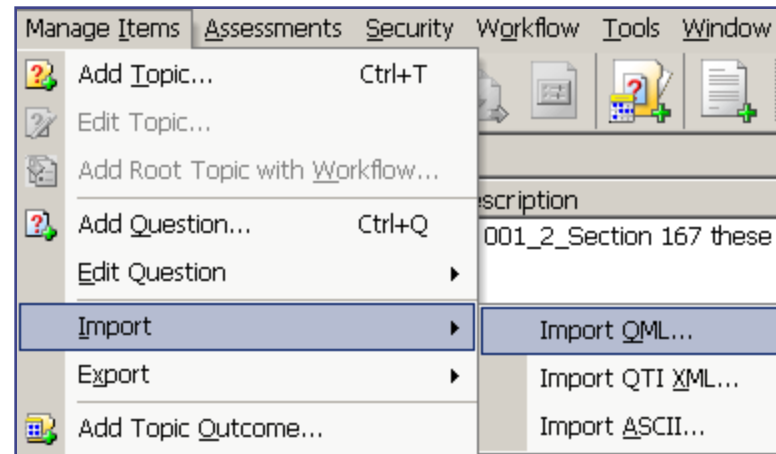
Authoring Manager Imports

- QPacks – Questions **AND Assessments**
 - Question *mark* Specific Format
 - Includes Assessment / Template / Images



Authoring Manager Imports

- Manage Items – Questions Only
 - Question Text Only – No Images
 - ◆ Questionmark Markup Language (QML)
 - ◆ IMS – Question & Test Interoperability (QTI)
 - ◆ ASCII – Using Marker Codes



ASCIi Format Example

Questionmark

What color does chlorophyll make plants?

Red
 Orange
 Yellow
 Green

1 out of 1

Good Job!

Continue

```

<TOPIC>EasyTestingAssessments\\Colors
<M>text/html
<T>MC
<Q>What color does chlorophyll make plants?
<D>What color does chlorophyll make plants?

<C>Red
<F>Sorry.
<C>Orange
<F>Sorry.
<C>Yellow
<F>Sorry.
<C+>Green
<F><P>Good Job!</P>
    
```



Question Import / Export

- ASCii – Import Definitions
- Tools | Question ASCII Import Definition

Question ASCII import definitions

<TOPIC>	Topic Name
<Q>	Start of Question
<C+>	Correct choice (scores 1)
<C>	Incorrect or distractor choice (scores 0)
<C->	Incorrect or distractor choice (scores -1)
<F>	Feedback for choice
<D>	Question description
<T>	Set question type
<S>	Tag prefixing (Y/N) to define shuffling choices
<M>	Tag prefixing MIME type plain or HTML
<#>	Comment (lines following this not imported)

Reset to Default

OK Cancel Help



What about Topics?

- Improvements made in Version 4.3
 - Topics in the Import File
 - ◆ **<TOPIC>** Geography\\PhysicalGeography\\Geomorphology
 - Double Backslashes Separate Topic and Subtopics
 - **Topics that Do Not Exist Will Be Created**
 - Topic Security is Enforced on Import
 - ◆ Authors may only import into, or create topics where their permissions allow



Question Import / Export

■ ASCII – Find and Replace Example

1. What is the capital city of Uganda?

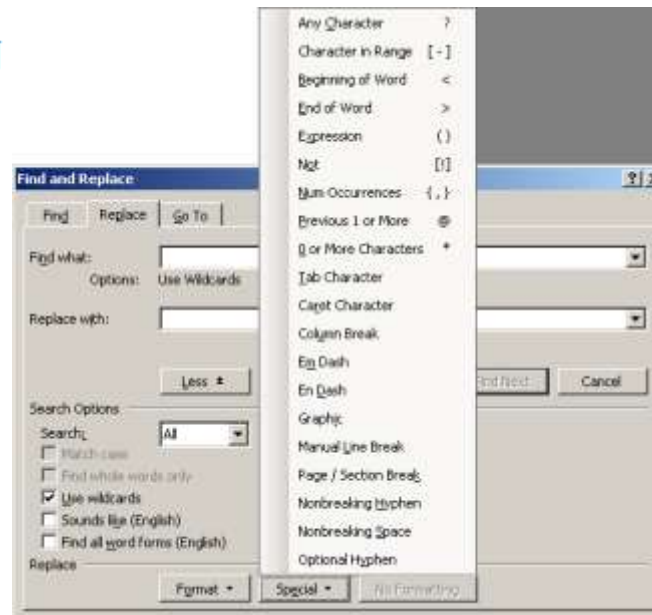
- a) Kampala
- b) Kinshasa
- c) Nairobi

2. What is the capital city of Peru?

- a) Santiago
- b) Lima
- c) Buenos Aires

3. What is the capital city of France?

- a) Berlin
- b) Lisbon
- c) Paris



<Q>What is the capital city of Uganda?

- <C>Kampala
- <C>Kinshasa
- <C>Nairobi

<Q>What is the capital city of Peru?

- <C>Santiago
- <C>Lima
- <C>Buenos Aires

<Q>What is the capital city of France?

- <C>Berlin
- <C>Lisbon
- <C>Paris



ASCIi Find and Replace

- You must Save Out Word as .TXT before Importing ASCIi
- Demonstrate ASCIi Find and Replace in MS Word



QML (XML) Format Example

```

<QUESTION ID="3462382403230951" DESCRIPTION="What color does chlorophyll make plants?" TOPIC="EasyTestingAssessments\Colors" STATUS="Normal">
<CONTENT TYPE="text/html"><![CDATA[What color does chlorophyll make plants?]]></CONTENT>
<ANSWER QTYPE="MC" SUBTYPE="VERT">
  <CHOICE ID="0">
    <CONTENT TYPE="text/html"><![CDATA[Red]]></CONTENT>
  </CHOICE>
  <CHOICE ID="1">
    <CONTENT TYPE="text/html"><![CDATA[Orange]]></CONTENT>
  </CHOICE>
  <CHOICE ID="2">
    <CONTENT TYPE="text/html"><![CDATA[Yellow]]></CONTENT>
  </CHOICE>
  <CHOICE ID="3">
    <CONTENT TYPE="text/html"><![CDATA[Green]]></CONTENT>
  </CHOICE>
</ANSWER>
<OUTCOME ID="0 Red" SCORE="0">
  <CONDITION>"0" </CONDITION>
  <CONTENT TYPE="text/html"><![CDATA[Sorry.]]></CONTENT>
</OUTCOME>
<OUTCOME ID="1 Orange" SCORE="0">
  <CONDITION>"1" </CONDITION>
  <CONTENT TYPE="text/html"><![CDATA[Sorry.]]></CONTENT>
</OUTCOME>
<OUTCOME ID="2 Yellow" SCORE="0">
  <CONDITION>"2" </CONDITION>
  <CONTENT TYPE="text/html"><![CDATA[Sorry.]]></CONTENT>
</OUTCOME>
<OUTCOME ID="3 Green" SCORE="1">
  <CONDITION>"3" </CONDITION>
  <CONTENT TYPE="text/html"><![CDATA[<P>Good Job!</P>]]></CONTENT>
</OUTCOME>
</QUESTION>

```



QTI (XML)

- Platform and Vendor Independent Language Developed by the IMS
- The **IMS** is an International Organization Which Creates Standards for Learning.
- Primary Focus is Question and Test Interoperability
- QTI XML is a Specification for an XML Test and Question Description Language



QTI (XML)

- QTI XML can make it easy to get questions from one software package to another
- The following question types are supported
 - Multiple Choice
 - Multiple Response
 - Numeric
 - Pull-down list
 - Fill in Blanks, Matrix
 - Essay
 - Java
 - Matching
 - Ranking
 - Select a Blank
 - Macromedia Flash



QTI (XML)

- Currently *Perception* supports version 1.2 of the IMS QTI specification
- Only items (questions) in QTI XML can be imported / exported at this time**

Functionality		Level of Support				
		Data File	Import	Export	Repackage	Explanation of optional functionality supported
Assessment level element support	Mandatory	N	N	N	N	
Section level element support	Mandatory	N	N	N	N	
Item level element support	Mandatory	N	Y	Y	N	
	Response types	N	Y	Y	N	response_num, response_lid, response_xy, response_str
	Material	N	Y	Y	N	text/plain, text/html, text/mathml, image
	Scoring	N	Y	Y	N	Default scoring model only (SumofScores)
	Feedback	N	Y	Y	N	Candidate view for all item feedback



QTI (XML) Format Example

```
<questestinterop>
<item title="What color does chlorophyll make plants?" ident="9510378478183525">
<itemmetadata>
<qmd_itype>Multiple Choice</qmd_itype>
<qmd_status>Normal</qmd_status>
<qmd_toolvendor>Questionmark Perception</qmd_toolvendor>
<qmd_topic>NewImports</qmd_topic>
</itemmetadata>
<presentation>
<material>
<mattext texttype="text/html"><![CDATA[What color does chlorophyll make plants?]]></mattext>
</material>
<response_lid ident="1">
<render_choice shuffle="No">
<response_label ident="A">
<material>
<mattext texttype="text/html"><![CDATA[Red]]></mattext>
</material>
</response_label>
<response_label ident="B">
<material>
<mattext texttype="text/html"><![CDATA[Orange]]></mattext>
</material>
</response_label>
<response_label ident="C">
<material>
<mattext texttype="text/html"><![CDATA[Yellow]]></mattext>
</material>
</response_label>
<response_label ident="D">
<material>
<mattext texttype="text/html"><![CDATA[Green]]></mattext>
</material>
</response_label>
</render_choice>
</response_lid>
</presentation>
<resprocessing>
```

... Too Long: Some Text Removed ...

```
<rescondition title="3 Green" >
<conditionvar>
<varequal respident="1">D</varequal>
</conditionvar>
<setvar action="Set">1</setvar>
<displayfeedback linkrefid="3 Green"/>
</rescondition>
</resprocessing>
<itemfeedback ident="0 Red" view="Candidate">
<material>
<mattext texttype="text/html"><![CDATA[Sorry.]]></mattext>
</material>
</itemfeedback>
<itemfeedback ident="1 Orange" view="Candidate">
<material>
<mattext texttype="text/html"><![CDATA[Sorry.]]></mattext>
</material>
</itemfeedback>
<itemfeedback ident="2 Yellow" view="Candidate">
<material>
<mattext texttype="text/html"><![CDATA[Sorry.]]></mattext>
</material>
</itemfeedback>
<itemfeedback ident="3 Green" view="Candidate">
<material>
<mattext texttype="text/html"><![CDATA[<P>Good Job!</P>]]></mattext>
</material>
</itemfeedback>
</item>
</questestinterop>
```

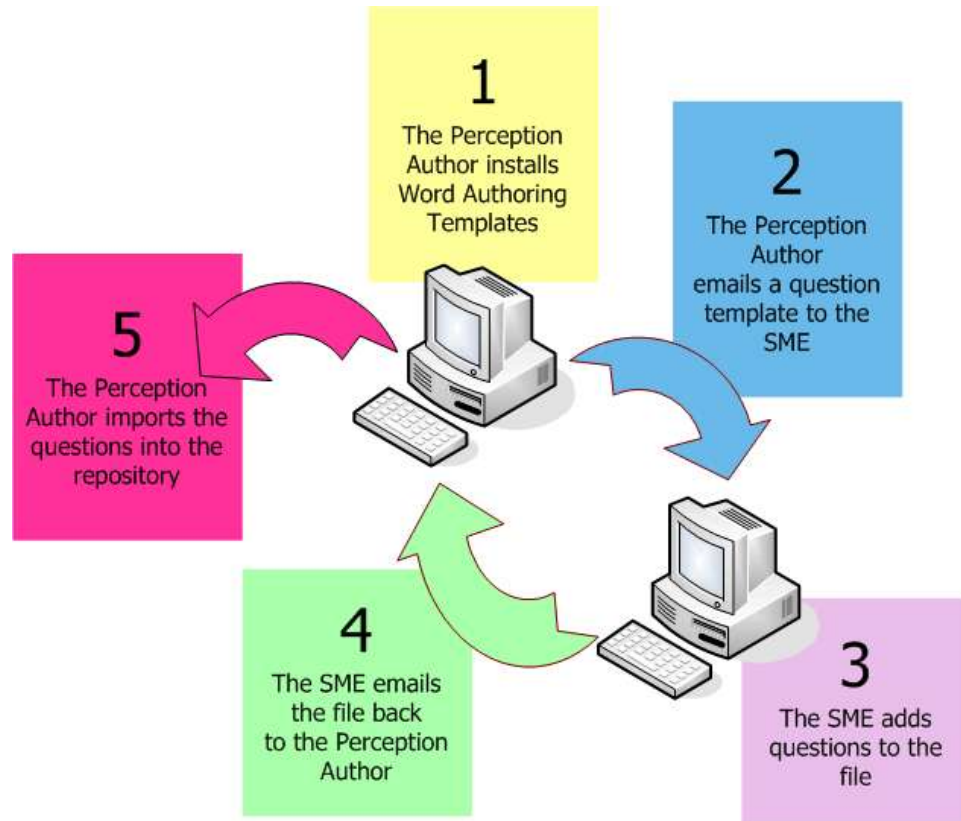


Word Authoring Templates

- Multiple Choice
- Yes / No
- True / False
- Likert Scale


- Authoring Manager 4.1+
- Office 2000, XP, 2003, 2007
- MAC Word 2004, Word X
- MDAC 2.8

- User Must Have Administrative Privileges on their Computer
- Macro Security Trust Change



Word Authoring Templates

- Found under “My Downloads”
 - <http://www.questionmark.com/communities/mydownloads.aspx>

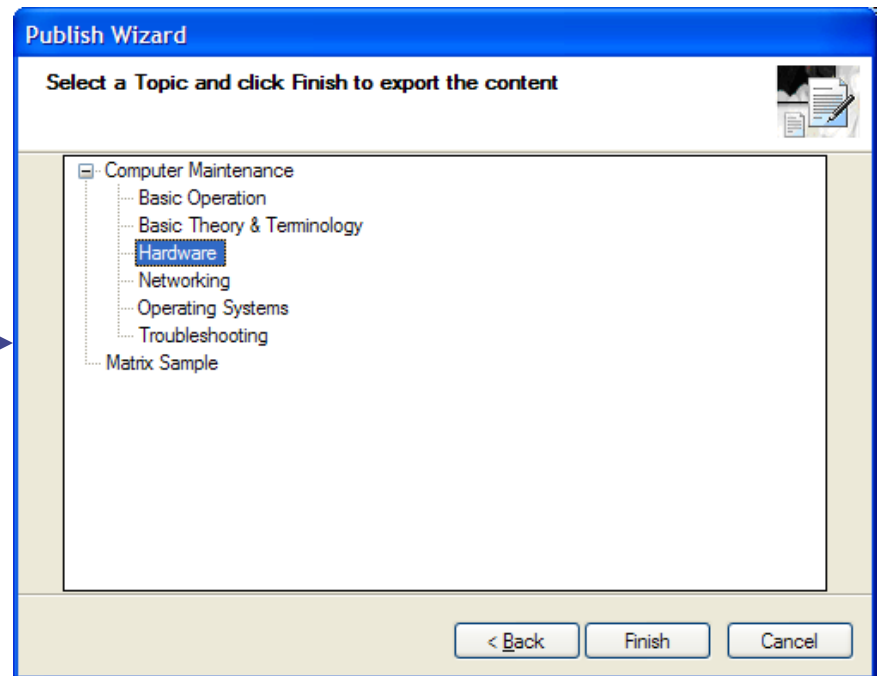
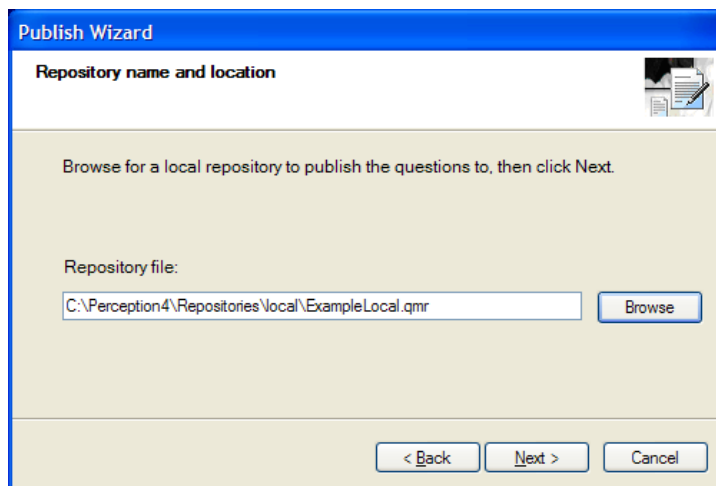
Add-Ons to Perception v4			
	<input type="checkbox"/> Questionmark Perception Survey Report Software	Download	Documentation
	<input type="checkbox"/> Questionmark Word Authoring Template for Mac authors (for version 4)	Download	Documentation
	<input type="checkbox"/> Questionmark Word Authoring Template for PC authors (for version 4)	Download	Documentation
	<input type="checkbox"/> Questionmark Word Authoring Templates Publishing Software (for version 4)	Download	Documentation

- 3 Word Templates Available
 - ◆ MAC Content Authors
 - ◆ PC Content Authors
 - ◆ Publisher – Publish to Local Repository



Word Authoring Templates

- Publish Questions to Local Repository (.qmr)



Demonstrate Word Authoring

Question 1

Question Stimulus:	What is the freezing point of water?	
Description:	Science question 1	
Shuffle Choices?	All	
Score:	Choice Text:	Feedback Text: (optional)
[0]	100 degrees	100 degrees is not correct.
[0]	98.4 degrees	98.4 degrees is not correct.
[0]	12 degrees	12 degrees is not correct.
[1]	0 degrees	0 degrees is correct.
[0]	<enter choice text>	<enter feedback text>

- Demonstrate the Use of the Word Authoring Template to Publish Questions



Custom Word Template Solution

- Requirements
 - Use of Comments / Revision History in Word
 - Importation of Metatags (QML Needed)
 - Support of HTML tags in Questions / Feedback

- Problem
 - Using Word Form turns off Comments / Revision History

- Solution
 - Use Word Tables with Custom Tags
 - Parse Word Text into QML using Visual Basic Application (VBA)



Summary: Options we have Covered

What to do when...	Option....
I have lots of items in Word documents or text files.	<ul style="list-style-type: none"> ■ ASCII import usually best option ■ Can also cut and paste into Word Authoring Template or Open Authoring
I have item banks from a text book publisher.	<ul style="list-style-type: none"> ■ Content converter ■ QTI XML import ■ ASCII import
I have items in another application such as Blackboard, or a QTI XML compliant authoring tool.	<ul style="list-style-type: none"> ■ Content converter ■ QTI XML import
I want to easily harvest items from instructors or subject matter experts.	<ul style="list-style-type: none"> ■ Open Authoring ■ Word authoring templates



Resources

- **Best Practice Guide:** Importing Questions and Assessments into Perception
 - http://www.questionmark.com/perception/help/v4/best_practice/importing/index.html
- **Word** Authoring Template Manual
 - <http://www.questionmark.com/perception/help/v4/manuals/wat/admin/index.html>
- **QML** Specification
 - http://www.questionmark.com/perception/help/v4/knowledge_base/programming_and_database/prog403.aspx
- **AScii** Specification
 - http://www.questionmark.com/perception/help/v4/best_practice/importing/importing_content/ascii_import.htm
- **AScii** Import – MS Word Find and Replace Using Wildcards
 - <http://office.microsoft.com/en-us/help/HA010873051033.aspx>
- **QTI** Specification - IMS Question & Test Interoperability Specification
 - <http://www.imsproject.org/question/>
 - http://www.imsproject.org/question/qtiv1p2/imsqti_asl_bestv1p2.html
 - http://www.questionmark.com/perception/help/v4/knowledge_base/programming_and_database/prog406.aspx
- Questionmark **Content Converter** (QTI 1.*, Blackboard 6.*)
 - <http://licensing.questionmark.com/contentconverter/default.htm>



Thank You for your Attention

Questions?



2008 Users Conference ♦ San Antonio

